



## SHOTGUN GUN CHECK

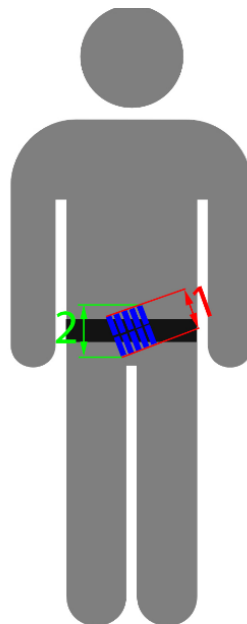
### 1. SAFETY

- A. Trigger** While pointing the shotgun in a safe direction verify that both the magazine well/Tube and chamber are empty. With the hammer cocked, pointing the shotgun in a safe direction lower the hammer by pressing the trigger.
- B. Manual Safety.**  
With the hammer cocked and the safety on, press the trigger. The hammer should not drop.  
With the hammer cocked and the safety on, press the trigger. Release the trigger and take the safety down to the off position. The hammer should remain cocked.

### 2. AMMO CARRIERS

- A. Ammo Belt must be at Waist level, 170mm is the maximum height as measure in the vertical**

Cartridges carried horizontally in loops or clips can be in more than 170mm, as long as the carriers are attached directly on the belt itself as if they were caddies and not on extensions attached to the belt, transferring the cartridges away from the belt zone.



**Measure using n. 2 as reference**

Attention: It will be allowed a tilt of the carriers on the belt, even if it does not totally fall within 170mm. the limit was intended to cover a simple solid number the total height of



shells on the top of each other, not the further distance from the middle of the belt when the system is tilted.



**This is allowed**, the further shells from the middle of the belt may not fall totally within 170mm



**ALLOWED**



**Allowed**



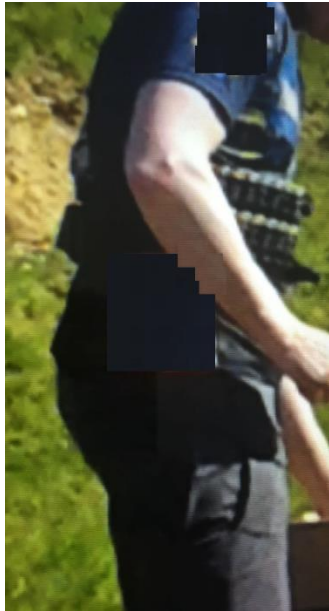
**Allowed**



**6 in the Caddy is Allowed (Strippers).**



**Not Allowed**, any configuration that resembling chest rigs (much higher than the waist level almost to the chest).



**Not Allowed**, This is a chest ring, it is not at the waist level.

- B. 75mm is the maximum distance permitted of any part of the cartridge from the competitor body. Open Division competitors are exempt from this rule.
- C. 1320mm, is the maximum length for OPEN and Modify Division, the shotgun can not be compressed in any way during the test, remember to extend to the maximum the stock if adjustable.

- Fit the biggest Competitor Choke
- Expand the collapsible stock



BOX Testing for OPEN and Modify

| ←----- 1320mm -----> | ( Internal size )



### 3 Customization and Accessories

#### A. LOADING FLOOR PLATES IN STANDARD DIVISION

Protrusion of the loading floor plate in Standard division is acceptable when not exceeding the frame of the shotgun, measured with the fore stock and not only restricted to the metal parts of the firearm.



ACCEPTABLE



ACCEPTABLE



ACCEPTABLE

### EXCEPTION



External feed ramp as direct replacement of the carrier release button example (Remington 1100 and 1187 only). Specifically allowed in Standard Div. see point 21.

**B. Thumb Rest in any division is acceptable.**



**C. Optical or Electronic sights are allowed in OPEN and MODIFY Divisions**



**D. Compensators only allowed in Open and Modify**

Attention these chokes are considered compensators, ask to see all chokes that are going to be use at the match:



**4. Ammo**

- 5.5.6.2 [S] Only Cartridges with conventional wads are permitted.



Conventional ONLY



## 5. Strong Shoulder

Make sure you note at the equipment check sheet the Strong Shoulder of the competitor.